

## Block of The Month 2023: Block #3

Hello – this month we are continuing our log cabin variations, and this one is called pineapple. The 2023 focus fabric is from Hoffman and is called Paint Impressions. In addition to the focus fabric, you will need a white fabric and two additional coordinating fabrics based on the colors in the focus fabric. Remember, all our blocks end up 12.5" X 12.5" (a 12" finished block.) We will have the focus fabric available for sale at guild meetings for \$3 per fat quarter. This year, if you purchase focus fabric and turn in block of the month blocks for at least two months, we will refund your \$3.



Also, the Guild's website and Facebook page should have a post directing you to the YouTube instructions for this block.

### Cut list -- For one block:

Center (focus fabric): One 3.5" square

White: Two strips – 2" X WOF

Two 5.5" squares (wait to cut these)

Two Coordinating fabrics: One strip of each – 2" X WOF

### Assembling the block: Use a quarter inch seam. Press to the newly added fabric

- Each round fabrics will be sub-cut based on the length of the sides of your block. In this first round, you need four 3.5" pieces cut from your white fabric strip. Sew these to the edges of the center square, 1<sup>st</sup> sewing to two opposite sides, pressing, then sewing the last two sides. When sewing the 3<sup>rd</sup> and 4<sup>th</sup> pieces, match to the edges of the original square. (Photo 2.) Next, trim as shown in photos 3 and 3a, leaving ¼" above the intersection of each two of the added sides and lining up the center edge with a 45° line on your ruler. (Photos 3 and 3a.)
- In the next round, you will add two pieces each of coordinating fabric. Measure the length of the sides of your trimmed square from the last step – it should be approximately 4.75" Sub-cut your strips to the length of the sides of your block. Add one color to opposite sides, press, add the second color. For the rest of the block, make sure you add the same color of fabric to each side, adding opposite sides, pressing, then the next two sides. To trim the second round, first check that the pieces you added measure 1.75" and then use the same method as for the last round.
- Now, measure the length of the sides of your block, they should be approximately 4.5". Sub-cut pieces that are .5" longer than the length of your sides – probably 5". Line up the sides as in photo 4. Sew together and press. This time we will trim differently since there is no intersection of the pieces added. Now we use the 1.75" line on your ruler and the 45° line to measure the width of the prior round. Photo 5 shows how to line up the ruler. Trim off the points.
- Repeat this process to add each new round. Measure the new length of the side to be added, add ½" to this length and sub-cut pieces for the round. There are two more rounds of coordinating fabric and one more round of white to add.
- After you add the last round of coordinating fabric, measure the length of the sides for the last step. This length, plus ½" is the length of the diagonal of the two squares you need to cut from your white fabric. This is listed above as 5.5" square (which has a diagonal of approximately 7.5",) but we said to wait to cut it so you could verify the size you need. Cut these squares on one diagonal, add to the white edges, press. Photo 6 shows placement of these pieces.
- Now to square it up. Use your 12½" X 12½" square up ruler, place it over the block. Trim to 12½" X 12½".

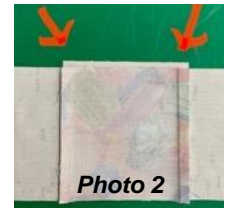


Photo 2



Photo 3



Photo 3a



Photo 4



Photos 5



Photo 6



Link to YouTube

Adriane Ridder & Shelly McNeely  
Block of the Month Coordinators