

Block of The Month 2024: Block #3

Here is our March block, called Alabama Variation. If you plan to make blocks for the monthly drawing at the April guild meeting, you must use our focus fabric, Yalke by June Smith for M&S Textiles. We will not be able to attend the March meeting, so let us know ASAP if you desperately need some focus fabric. For this block, you need the focus fabric, a white fabric and a light and a dark coordinating fabric. Remember, all our blocks end up 12.5" X 12.5" (a 12" finished block.)

There is a link to the YouTube video instructions below or go to our channel at: <https://www.youtube.com/@Blockheadsquilt>

Cut list -- For one block

Focus Fabric: Two 2" X 6.5"

White: Four 2" X 3.5"

Four 2" X 9.5"

Light Coord. fabric: Twelve 2" squares

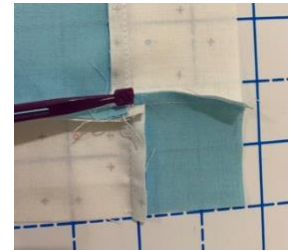
One 3.5" square

Dark Coord. fabric: Two 2" X 6.5"

Assembling the block: Use a quarter inch seam.

- Add a light coordinating 2" square to each end of the following pieces: two white 2" X 3.5" strips, two white 2" X 9.5" strips and two focus fabric 2" X 6.5" strips. Press the 3.5" and 6.5" strips to the darker fabric and press the 9.5" strips to the white.
- Now we will make the center 9-patch. Sew a white 3.5" strip to opposite sides of the light coordinating fabric 3.5" square. Press to the center. To the other two sides of this square, sew two of the units we made in the last step, the 6.5" strip containing two light coordinating squares and a short white strip. The seams should nest. Press to the newly added strips or do the twirly press. (See photo.) This unit should be 6.5" square.
- Add the next two rounds in the same manner. First sew a dark coordinating strip to opposite sides of the square we just made. Then add the two focus fabric strips we made in the first step. Press as before. The remaining pieces are used in the last round.
- Finished block should be 12½" X 12½".

Adriane Ridder & Shelly McNeely
Block of the Month Coordinators



Twirly press



Center 9-patch



Link to YouTube