

Block of The Month 2018: Block #1

Hope you are ready for another year of block of the month. I talked at the November meeting and showed everyone there the focus fabric we will be using every month. The fabric we chose is Effervescence – Wild by Robert Kaufman. The color scheme for 2018 is going to be the focus fabric (only a small piece), a fabric you choose based on the colors in the focus fabric, black and /or white depending on how many colors are needed in the block. All blocks will be a nine patch or nine patch variation. This photo shows the focus fabric with some possible coordinating fabrics around it.

We will be selling fat quarters of the focus fabric at the meetings for \$2 each. It should only take one fat quarter to make the twelve blocks for this year.



Our first block of the year is a basic nine patch. Use the photos to get the color placement. We encourage you to make two blocks, one to enter in the drawing and one to keep.

Cut list -- For one block:

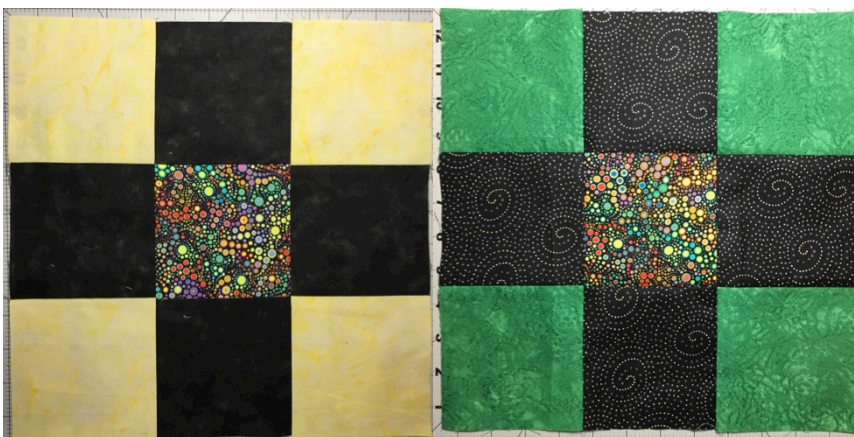
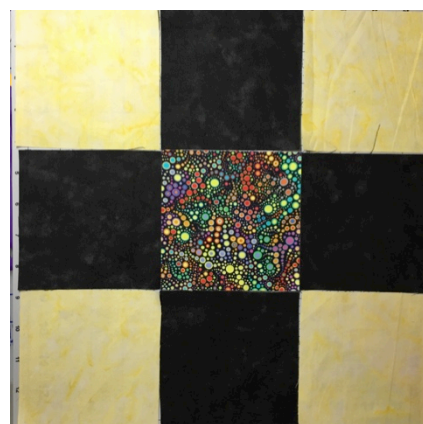
From focus: one 4 1/2" square

From black and your coordinating fabric: four 4 1/2" squares

Assembling the block:

- Layout pieces in correct order as shown in photo.
- Using a precise 1/4" seam allowance and right sides together, sew the horizontal rows together, pressing toward the black fabric.
- Keep rows in order and now sew rows together. If pressed correctly, the seams should nest and help patches aligned.

• Press seams and square the block to 12 1/2" x 12 1/2". Repeat to make a second block to keep! Here are photos of our finished blocks. Look at the difference depending on if you pick a dark or light coordinating fabric. Have fun – we won't go so easy on you next month.



Adriane Ridder & Shelly McNeely
Block of the Month Coordinators