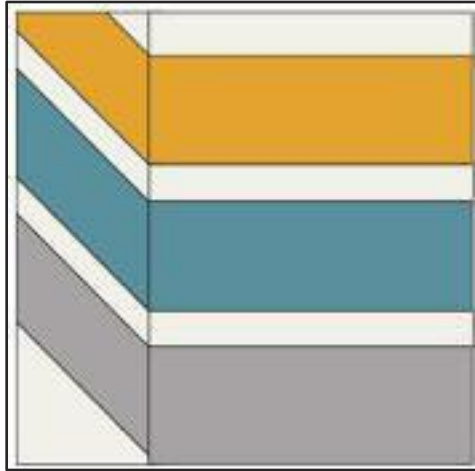


Block of the Month: Block 6--blocks due at the September meeting

Here is our next block -- we are half way there. We are still using our neutral color palette. The colors shown in the these instructions are for illustration only. There is a picture below on the right and additional information about the palette is in the January 2015 newsletter. All blocks are 12.5" blocks — 12" finished
 This block includes some paper piecing. I know many of you have done paper piecing before. I have converted the template that was provided for this block so that you place the fabric on the back and sew on the front on the printed lines. The original version on the blog <http://www.sewmamasew.com/> was reversed and you placed the fabric on the front and sewed on the back. You can get either version on our website. You will need to print out the template -- one copy for each block you make. I will have some copies at the meeting. If you print on legal size paper, it will fit on one page.



Neutral color palette

Fabric Requirements: (If making two blocks --double this.)

Fabric A (background): 13" x 9" rectangle

Fabric B (print): 1: 6.5" x 9" rectangle

Fabric C (print): 1: 6.5" x 9" rectangle

Fabric D (print): 1: 6.5" x 9" rectangle

Cut List:

A1 = 1.5" x 9"

A2 = 1.5" x 9"

A3 = 1.5" x 9"

A4 = scrap that is at least 2.5" x 2

A5 = scrap that is at least 1.5" x 8"

A6 = scrap that is at least 1.5" x 8"

A7 = scrap that is at least 4" x 6"

B1 = 3.5" x 9"

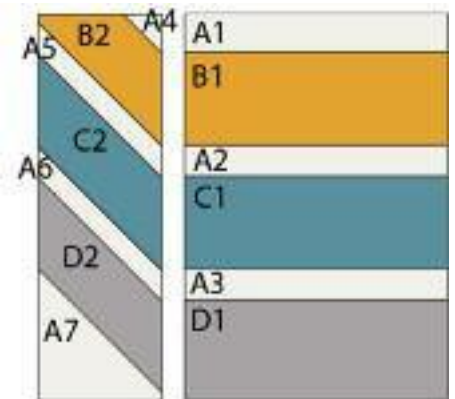
B2 = scrap that is at least 3" x 7"

C1 = 3.5" x 9"

C2 = scrap that is at least 3" x 9"

D1 = 3.5" x 9"

D2 = scrap that is at least 3" x 9"

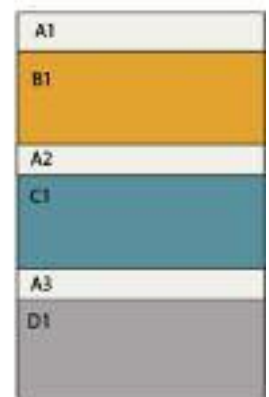
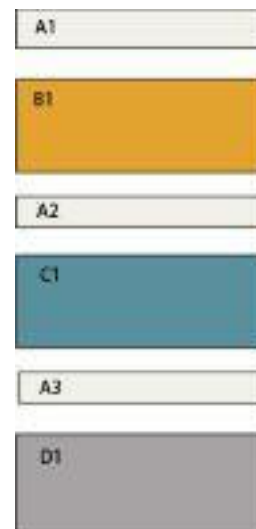


Assembling the Block:

1. Sew together A1, B1, A2, C1, A3 and D1 as pictured on the lower right. It is very important that you sew this portion with a uniform 1/4" seam allowance for the block to all line up as it should.

2. Print out the paper piecing template. When you print, make sure that you aren't scaling the image and that it will print out full size (4" x 12.5") on one legal sized or two letter sized pieces of paper. If you are an experienced paper piecer, accustomed to putting the fabric on the back of the paper and sewing on the front, then use the template labeled reversed. If you are new to this, then the instructions below will tell you how to paper piece in a way that requires no special rulers like the add-a-quarter ruler. Use the original template and follow the instructions below. you may want to trace the lines onto the back of the paper to make sewing easier.

3. Additional printing instructions: If using letter sized paper, in



Adobe Reader you'll need to select "tile large pages" under Page Scaling in the print window. (Pick poster under page sizing and handling.) Cut out the two portions of the template and tape them together. It should be easy to see how the two pieces line up; they will overlap a bit.

4. Now, set the stitch length on your sewing machine to shorter than you usually sew with. This will make your needle perforate the paper more when you're sewing and the paper will be easier to tear out once you are finished. The idea with paper piecing like this is that rather than cut and sew your fabric to very specific sizes, if you use large enough scraps and sew on the lines on the template, then you're sewing to those very specific sizes. Experienced paper piecers -- make the unit on the template and skip instructions 5 through 8.

5. Now take your scraps for A4 and B2 and overlap them so that they sit at least a 1/4" over the line you're going to sew on. Make sure that B2 is arranged so that it will cover all of the B2 section on the template once you flip and press it down.

6. Sew them on, following the line on the template. I find that turning fabric and the template over when you sew works the best as the fabric covers the line. When it's turned over, you can see the line through the paper. This is the only step in which you'll sew two pieces on at once. From here, you'll sew on the next pieces one at a time, right sides together so that when you flip and press down the piece you just sewed on, it covers the correct portion of the template.

7. Flip and press down your B2 scrap.

8. Continue sewing on A5, C2, A6, D2 and A7, always sewing directly along the lines on the template. Before you sew on the fabric pieces, make sure you arrange them so that when they are flipped down they will cover all of the portion of the template that they should. With this method of piecing you don't need to worry about 1/4" seam allowances, but don't let them get smaller than a 1/4". When you are done, your piecing will look like this:

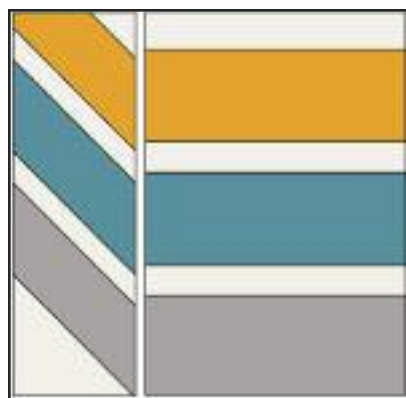
9. Now use the paper template to trim your piecing down to an exact 4" x 12.5" rectangle. When you do this you will be cutting some bias edges into your fabric so take care to not stretch or pull this piecing at all. It can warp easily.

10. Next remove all of the paper on the back of your piecing. This is the point where you'll be happy you decreased your stitch length!

11. You'll notice that with this type of piecing, your seam allowances can be much bigger than a 1/4". Feel free to trim them down at this point if you'd like to. Again, take care that you don't pull on the bias edges of the piecing and warp it as you do this. Your paper piecing is done!

1. Sew your first A1/B1/A2/C1/A3/D1 to your paper pieced portion. Again, it is important to use a 1/4" seam allowance for this seam.

You'll notice that it looks like the piecing won't line up, but the 1/4" seam allowance

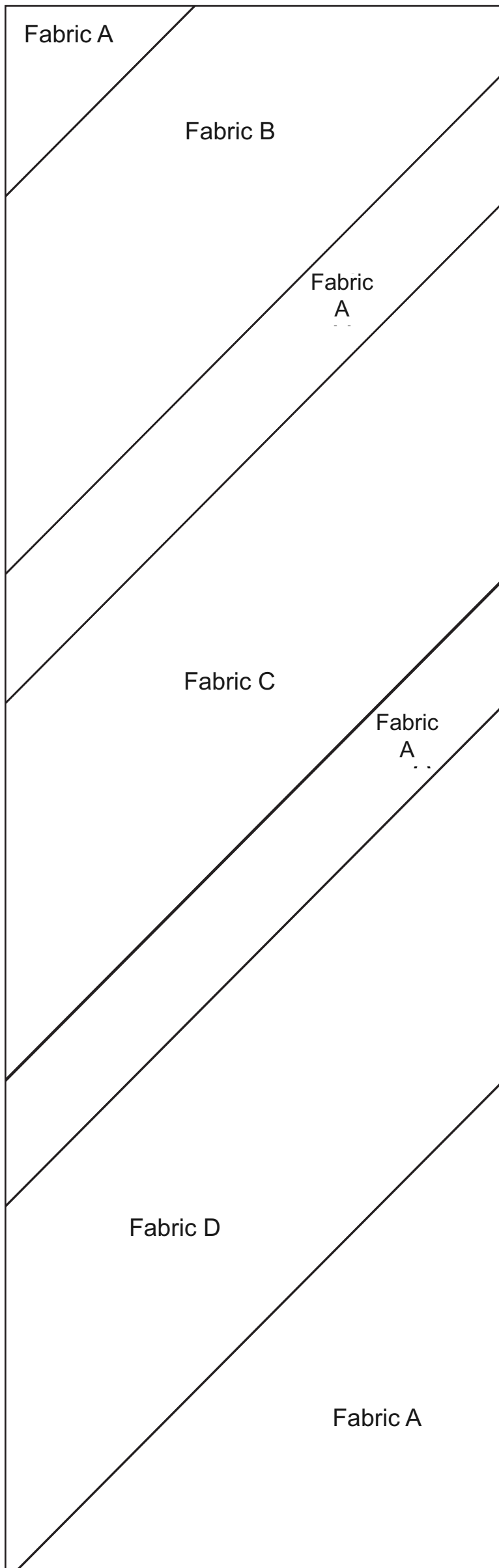


you sew the two portions together which will eat up that discrepancy, making them line up just right. Pin this seam thoroughly before sewing it to make sure that your seams and piecing will match up correctly.

Note that it looks like the gray on the bottom doesn't line up, but when you sew the block into sashing, or to other blocks, that small 1/4" of grey will disappear into the seam.



Reversed



Fabric A

Fabric B

Fabric
A

Fabric C

Fabric
A

Fabric D

Fabric A